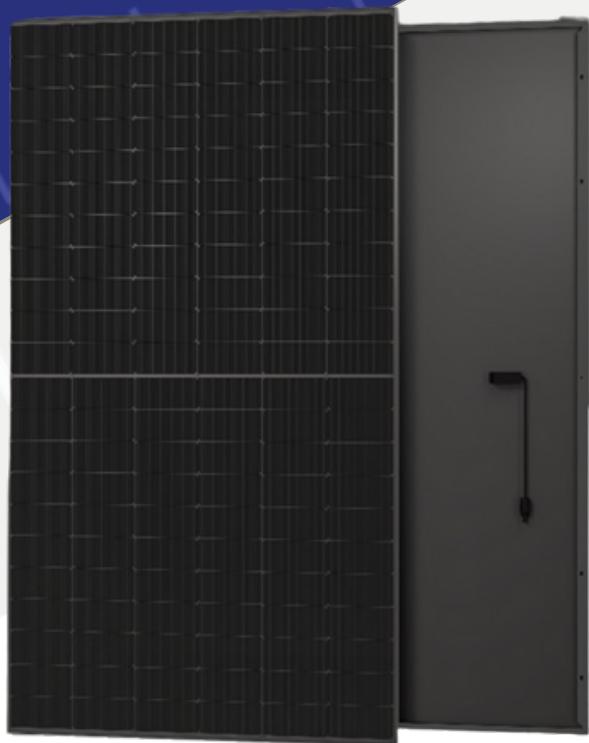


TOPSUN

ALL BLACK

HIGH PERFORMANCE
MONOCRYSTALLINE
N-TYPE TECHNOLOGY



TOP - 415/435M-108AB

108 CELL
Mono N - Type Module

415 - 435Wp
Power Output Range

S/Double Glass
Black Backsheet

22.28%
Maximum Efficiency

KEY SALIENT FEATURES



Industry leading lowest thermal co-efficient of power



Industry leading 15 years product warranty



Excellent low irradiance performance



Excellent PID resistance



Positive power tolerance of 0~+3%



Fully automated production at all stages



Fully Reduced power loss by minimizing the effect of shadow shading (9 - 18 Busbar)



EU Brand & European after sales service



TAMESOL BUILDING A GREEN FUTURE S.L

TAMESOL is a global provider of high-efficiency PV panels with a 10GW annual production capacity and a 100% automated production line, innovating state-of-the-art products for over 15 years. Our panels have been installed in more than 50 countries, with over 20 million panels already connected to the grid.

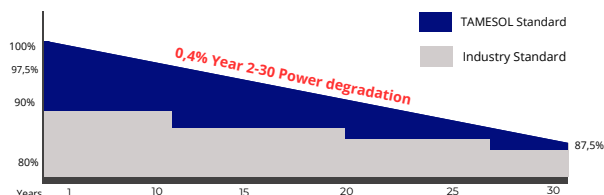
Tel : +34 933 801 596

E - mail: info@tamesol.com Website: www.tamesol.com

TAMESOL
Energia para vivir

LINEAR PERFORMANCE WARRANTY

15 year Product Warranty / 30-Year Linear Power Warranty

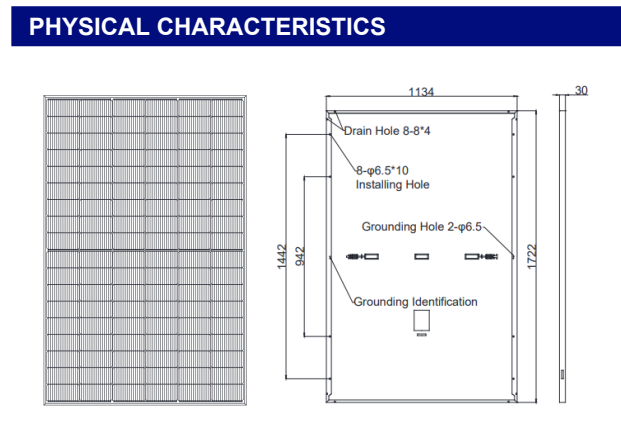


*Since 2007,
building a green future*

22,28% MAX MODULE EFFICIENCY	0 - +3% POWER TOLERANCE	1,0% FIRST YEAR POWER DEGRADATION	0,40% YEAR 2-30 POWER DEGRADATION	N-TYPE CELL Lower operating temperature
--	-----------------------------------	---	---	---

ELECTRICAL CHARACTERISTICS		STC: AM1.5 1.000W/m2		NOTC: AM1.5 800W/m2 20° 1 m/s		Test uncertainty for Pmax 0 - +3%				
Module type	TM - 415M-108AB		TM - 420M-108AB		TM - 425M-108AB		TM - 430M-108AB		TM - 435M-108AB	
Testing condition	STC	NOTC	STC	NOTC	STC	NOTC	STC	NOTC	STC	NOTC
Maximum Power (Pmax/w)	415	312	420	316	425	320	430	323	435	327
Open Circuit Voltage (Voc/V)	37,92	36,02	38,11	36,20	38,30	36,39	38,49	36,57	38,68	36,75
Short Circuit Current (Isc/A)	13,99	11,07	14,07	11,15	14,15	11,22	14,23	11,26	14,31	11,33
Voltage at Maximum Power (Vmp/V)	31,32	29,75	31,51	29,93	31,70	30,12	31,88	30,29	32,06	30,46
Current at maximum Power (Imp/A)	13,25	10,49	13,33	10,56	13,41	10,63	13,49	10,67	13,57	10,74
Module Efficiency (%)	21,25%		21,51%		21,76%		22,02%		22,28%	

MECHANICAL PARAMETERS	
Cell Orientation	single crystal N-Topcon 182x91mm (108 pieces)
Junction Box	IP68, three diodes
Output Cable	4.0mm ² 300mm(+) / 300mm(-) or customized
Glass	3.2mm high transparency, tempered glass
Frame	Anodized aluminum alloy frame
Weight	20,5kg
Dimensión	1722*1134*30mm
Packaging	36/37 pcs*pallet / 936/962 pcs*40HC



OPERATING PARAMETERS	
Operational Temperature	-40°C - +85°C
Power Output Tolerance	(0, +3%)
Maximum System Voltage	1500V DC
Maximum Series Fuse Rating	25 A
Nominal Operating Cell Temperature	45±2°C
Protection Glass	Class II
Fire Rating	Class C

MECHANICAL LOADING	
Front Side Maximum Static Loading	5400 PA
Rear Side Maximum Static Loading	2400 PA

TEMPERATURA RATINGS (STC)	
Temperature Coefficient of Isc	+0.046%/°C
Temperature Coefficient of Voc	-0.25%/°C
Temperature Coefficient of Pmax	-0.30%/°C

PACKING MANNER	
Container	40ft(HQ)
Number of modules per container	936/962
Number of modules per pallet	36/37
Number of pallets per container	26

TAMESOL Authorized Solar Dealer

Note: The specifications are obtained under the Standard Test Conditions (STCs): 1000 W/m2 solar irradiance, 1.5 Air Mass, and cell temperature of 25°C. The NOCT is obtained under the Test Conditions: 800 W/m2, 20°C ambient temperature, 1m/s wind speed, AM 1.5 spectrum. Please contact info@tamesol.com for technical support. The actual transactions will be subject to the contracts. This parameter is for reference only and it is not a part of the contracts. The specifications are subject to change without prior notice.